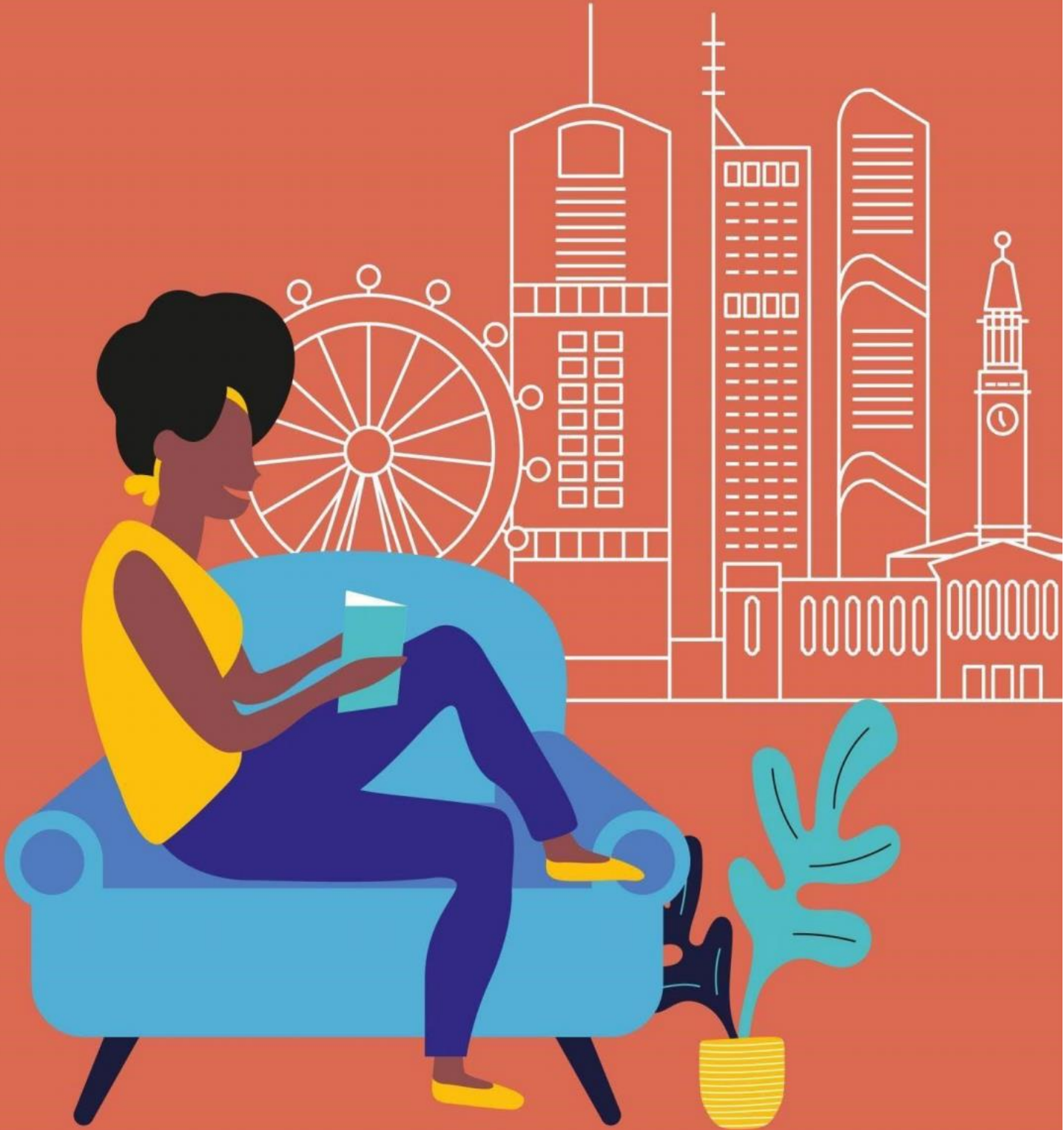


Accommodation Brisbane, Australia

2024



Accommodation in Brisbane

Accommodation placement fee: AU\$ \$300

Homestay

Our homestays are carefully selected and offer students the opportunity to learn more about Australian culture in a comfortable setting while studying English in Brisbane.

- Welcoming and friendly atmosphere
- Our homestay families are located within zones 1 and 2, within only 45 minutes by public transport from the school
- Carefully selected by our Accommodation Officer
- Choice of single rooms (or twin rooms for couples) with bed and breakfast or half-board
- All bed linen and towels provided
- Laundry facilities are available at no extra charge
- Reliable transport links
- Arrival is available any day of the week and will be charged on a weekly basis – additional nights subject to availability
- Self-catering is optional



Executive Homestay Option

Executive Homestays offer private bathroom facilities and are usually slightly larger in size than a general homestay option (limited availability).

Homestay Prices

Homestay Weekly Rates (per person per week)

| | |
|--|---------|
| Single room, HB | AU\$375 |
| Single room, B&B | AU\$300 |
| Twin room, B&B (same as single room rate)* | AU\$300 |
| Twin room, HB (same as single room rate) * | AU\$375 |

*Twin rooms are only available when two students of the same gender book together.

Extra Night Rates (per person per night)*

| | |
|-----------------------|--------|
| Single/Twin room, B&B | AU\$50 |
| Single/Twin room, HB | AU\$67 |

Key

B&B = Bed and Breakfast (Breakfast only).

HB = Half Board

(Breakfast and Dinner).

Homestays are subject to availability.

Before booking your flight tickets, please check with the school to ensure availability of homestay accommodations.

* Extra Night rates are chargeable up to 5 days. 6 nights bookings are to be billed using the Weekly rate.

* These prices are liable to change.

Supplemental Rates (per person per week)

| | |
|----------------------|-----------|
| U18 Full Board | AU\$95 |
| Special Diets B&B/HB | AU\$60/75 |
| Executive, en-suite | AU\$75 |

Student Guesthouses

This option is better suited for independent students who are seeking affordable and basic accommodation. Students must be 18 years old or above, except when accompanied by a parent or guardian in a twin or double room.

Student One

Location: 4 minutes by bus or 12 minutes walking from LSI Brisbane

Rooms: Studio apartment (single, twin), Shared apartment

Bathroom: Shared Bathroom in Shared Apartments / Private Bathroom for Single Studio Rooms

Meals: Self-catering; No meals included

Facilities: Free Wi-Fi, fitness facilities, media and study centres, various lounges, games room, indoor/outdoor BBQ, multi-use area, laundry facilities, free bikes for sharing, play stations, games room, cinema



Rooms Options:

ADELAIDE STREET

Bunk Studio | Twin Studio* | Single Studio | Queen/Adaptable Studio | King Studio | Executive Studio | 5 Bedroom Apartment - Standard | 5 Bedroom Apartment - Corner View

WHARF STREET

Single Studio | Double Studio | Double/Adaptable Studio | Executive Studio | 4 Bedroom Apartment | 5 Bedroom Apartment - Standard | 5 Bedroom Apartment - Corner View | 5-Bedroom Apartment - Queen Bed

ELIZABETH STREET

Single Studio | Queen/Adaptable Studio | Executive Studio | 4 Bedroom Apartment | 5 Bedroom Apartment - Standard
5 Bedroom Apartment - Double Bed | 6 Bedroom Apartment - Standard | 6 Bedroom Apartment - Ensuite

To inquire about the prices, please contact LSI Brisbane.

Availability: Year-round, minimum stay 4 weeks Other: Buildings and all living areas can only be accessed with a swipe card. Reception is staffed 24 hours.

Deposit & Cancellation Policy: Only 2 weeks of rent are required as a deposit to secure a booking. The deposit is fully refundable up to 21 days prior to check-in. If cancelled within 21 days from check-in, the deposit is non-refundable.

Check-in must be within 9 months from the booking date.

Note 1: Before booking, please check availability and prices with the school.

Note 2: Contact LSI Brisbane for additional information about prices, as they may change according to the season.

Note 3: Bedding is not included in the accommodation. However, students can purchase a bedding pack directly from Student One during check-in. Each pack includes a pillow, double doona, pillowcase, double doona cover, fitted sheet, flat sheet, bath towel, hand towel, and bath mat. Please check with the school for any updates as prices are subject to change without prior notice.

Note 4: Shared Apartments may be shared by different genders. Requests to stay in a unit with the same gender can be accommodate but is subject to availability. Please mention the request upon booking.

* Image for illustrative purposes only

Adalong Student Guest House

Location: Located in South Brisbane, which is a 10 minute walk from the Southbank train station and the Southbank Parklands. 15 minutes by bus or 30 minute walk to LSI Brisbane.

Rooms: Single Room

Shared bathrooms: Shared Bathroom (separate male and female)

Meals: Daily breakfast provided Monday to Friday, public holidays and weekends. A barbecue may be available for students to use on the weekends.

Facilities: Guest lounge, coffee/tea making facilities, coin operated laundry facilities, free internet access

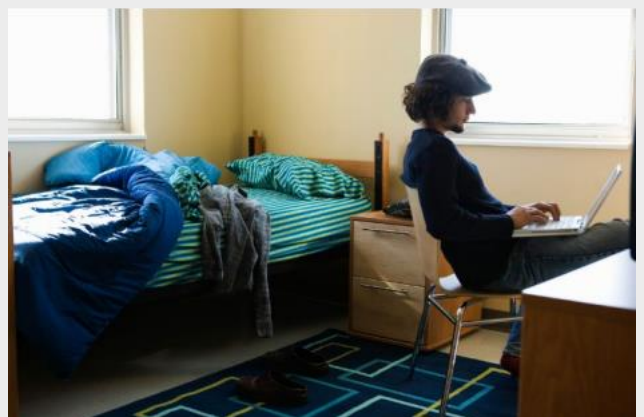
Prices (per room per week):

Single Rooms:

Bed & Breakfast only:

Weekly rate: from: 210 AU\$

Availability: All year round.



Other: Bedding and towels are washed weekly. Outdoor barbecues are organized by guests on weekends. Guesthouse manager is available 24/7.

Deposit & Cancellation Policy: Minimum one-week booking. Cancellation fee: 150 AUD. Cancellation notice of 14 days is required for bookings less than 3 months. 28 days' notice is required for bookings more than 3 months.

Note 1: Please check availability with the school before making a booking as prices are subject to change without notice.

Note 2: For additional information about prices, please contact LSI Brisbane as they may vary according to the season.

* Image for illustrative purposes only.

Please note: LSI reserves the right to replace residence options with similar alternatives subject to availability. Please check with the school at the time of booking.