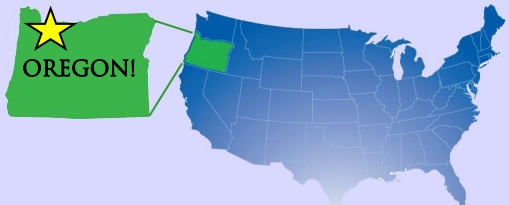




# PORTLAND ENGLISH LANGUAGE ACADEMY



Portland, Oregon USA



[www.PortlandEnglish.edu](http://www.PortlandEnglish.edu)



# WHY PORTLAND?



People in Portland are very nice and open-minded. It was easy to go out and meet new people. I enjoyed trying new ethnic restaurants and playing pool and other games at bars. Every week I could go to a music concert. It was so affordable!

—Tiziana, Switzerland

## Live more, pay less.

It costs less to live, play and study in Portland, because

**Oregon has no sales tax!**

Compare Portland to other cities at [www.numbeo.com](http://www.numbeo.com)

## AMAZING FOOD, DRINK & ENTERTAINMENT



over 100 breweries & 30 wineries

over 500 unique Food Carts



Culture Festivals & Street Markets

## UNIQUE FESTIVALS, CONTESTS & EVENTS



2 Sand Castle Contest

Naked Bike Ride



Zombie Walk



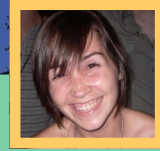
Warrior Dash

Christmas Festival of Light





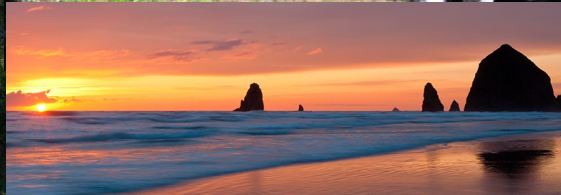
# WHY OREGON?



When I was in Oregon I did a lot of hikes in many different and beautiful places! I enjoyed getting to know Portlanders, too. Because of where Portland is located, it was easy to take trips to other cities on the West Coast, as well as the Olympic Peninsula, Multnomah Falls, and Crater Lake.

—Judith, Spain

## OUTDOOR ADVENTURES EVERY SEASON



## A variety of natural wonders.

Oregon has the most diverse climate of any state in the U.S. Enjoy hiking, camping, cycling, or rafting as you explore a region of amazing nature!







# PORTLAND ENGLISH LANGUAGE ACADEMY

## Study better, pay less.

**5% tuition discount** if you pay for **2 terms** at one time  
**10% tuition discount** if you pay for **3 terms** at one time

## PELA OFFERS MORE

- **Small class sizes** (8 to 15 students)
- **7 levels of classes**, "beginner" to "advanced"
- **College & test preparation**
- **4-week terms** every month
- **F-1 & non F-1** programs



### CAMPUS AMENITIES

- **Free tutoring sessions** with teachers
- **Conversation groups** every day

- Computer Lab
- Study Lab
- Private Study Rooms
- Free Wi-Fi
- Free Parking
- Student Lounge & Kitchenette
- 500+ Movie & TV Show Library



## HOUSING PLACEMENT OPTIONS

### HOMESTAY

*Live with a real American family*

- Private bedroom
- Breakfast and dinner every day
- Enjoy family activities and culture

NOTE: Some homestays host more than one student

### STUDENT HOUSE

*Share a house with other students*

- Private bedroom
- Kitchen to prepare your meals
- Enjoy group activities and sight-seeing

NOTE: Meals are not provided by the Student House





# SCHOOL ACTIVITIES EVERY MONTH

## JANUARY

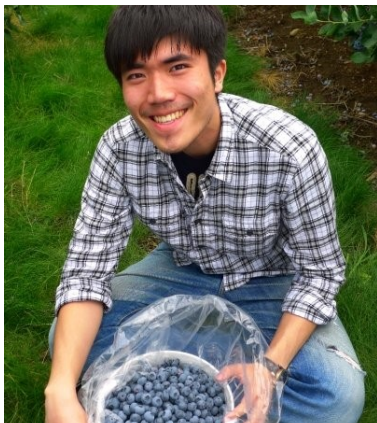
Bowling Night  
Miniature Golf Party

## FEBRUARY

Laser Tag Party  
Winterhawks' Hockey Game

## MARCH

St. Patrick's Day Pub Crawl  
Ping pong & Pool Party



## APRIL

Tulip Festival & Shopping  
Mt. Hood Adventure Camp

## MAY

Prom Dance  
Cinco de Mayo Festival

## JUNE

Trip to Oregon Zoo  
Casino Night

## JULY

Beach Trip  
PELA BBQ

## AUGUST

Waterfront Park Beer Festival  
Board Game Night

## SEPTEMBER

Corn Maze Trip  
Timbers' Soccer Game



## OCTOBER

Halloween Costume Contest  
Haunted House Tour

## NOVEMBER

Holiday Ale Festival  
Thanksgiving Lunch

## DECEMBER

Christmas Party  
Peacock Lane Walking

# COLLEGE PARTNERS & CONDITIONAL ADMISSIONS



## WHAT IS "CONDITIONAL ADMISSIONS"?

**Conditional Admissions** to a university means you can enter that university with a lower TOEFL or IELTS score.

Some schools don't require a TOEFL or IELTS score for PELA students!

Each university may have different requirements for conditional admissions. Requirements usually include:

- Finish PELA's highest level (**Level 6**) with a grade of B (**3.0 / 80%**).
- **Undergraduate Programs:**  
TOEFL Score: 60  
IELTS Score: 5.0  
No SAT, GRE or GMAT needed
- **Graduate Programs:**  
TOEFL Score: 65  
IELTS Score: 5.5  
Pass GRE/GMAT by end of first year



# CHOOSE AN ENGLISH PROGRAM



## English programs to help you reach your goals, at times convenient for you.

Each program term is 4-weeks long. You can change your program every term.

### INTENSIVE ENGLISH

20 Class hours per week

Monday	Listening & Speaking	Writing & Grammar	Integrated Skills
Tuesday	Reading, Vocabulary & Pronunciation		Grammar for Communication
Wednesday	Listening & Speaking	Writing & Grammar	Integrated Skills
Thursday	Reading, Vocabulary & Pronunciation		Grammar for Communication
Friday	Listening & Speaking	Writing & Grammar	Integrated Skills

Available to students with an F-1 (student) visa

### SEMI-INTENSIVE ENGLISH

17 Class hours per week

Monday	Listening & Speaking		Integrated Skills
Tuesday	Reading, Vocabulary & Pronunciation		Grammar for Communication
Wednesday	Listening & Speaking		Integrated Skills
Thursday	Reading, Vocabulary & Pronunciation		Grammar for Communication
Friday	Listening & Speaking		Integrated Skills

Available to students without an F-1 (student) visa

### INTENSIVE IELTS

20 English Skills Building class hours per week  
5 IELTS Test Preparation class hours per week

Monday	Vocabulary & Spelling	Speaking & Pronunciation	
Tuesday	Listening & Reading	Logical Reasoning	IELTS Test Preparation
Wednesday	Listening & Reading	Graph Analysis	
Thursday	Listening & Reading	Logical Reasoning	IELTS Test Preparation
Friday	Listening & Reading	Essay Writing	

Available to students with an F-1 (student) visa

### ACADEMIC ENGLISH

20 Class hours per week

Monday	Reading, Vocabulary & Speaking	Writing & Grammar
Tuesday	Reading, Vocabulary & Speaking	Writing & Grammar
Wednesday	Reading, Vocabulary & Speaking	Writing & Grammar
Thursday	Reading, Vocabulary & Speaking	Writing & Grammar
Friday	Reading, Vocabulary & Speaking	Writing & Grammar

Available to students with an F-1 (student) visa



If you don't raise your IELTS score by **1 point** after 3 months of Intensive IELTS, PELA will pay for your IELTS test!

### CLASSES THAT FIT YOUR ABILITIES!

Students are placed in different class levels **according to their ability in each skill.**

EXAMPLE: You can have a **Level 5 Reading** class and a **Level 4 Speaking** class.

### HOW FAST CAN YOU IMPROVE?

Students usually spend **2-3 months** at each class level.

Advance faster by taking a "**Level-Up**" Test at the end of each term.



# ADD EXTRA CLASSES TO ANY PROGRAM

Each class session is 4-weeks long

## + TOEFL IBT PREPARATION

+5 Class hours per week

**Improve your TOEFL score by 10 points...15 points...or more!**



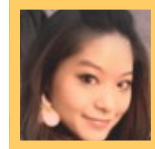
*My TOEFL teacher taught us many methods which were easy to understand. He is the best teacher that I ever took TOEFL classes with.*

- Hiroko, Japan

## + IELTS PREPARATION

+5 Class hours per week

**Improve your IELTS score by 0.5 points...1.0 points...or more!**



*The IELTS teacher is brilliant! He teaches in the way that makes the students believe in themselves and their skills. He is very motivating!*

- Kuo, Taiwan

## + TOEIC PREPARATION

+5 Class hours per week

**Improve your TOEIC score by 50 points...100 points...or more!**



*I love everything about my TOEIC class! The small class size is perfect, and I like the balance of individual practice and group work.*

- Nayyaf, Saudi Arabia

## + VOLUNTEERING

+2-4 hours of Volunteering

+1 hour Volunteering & Culture Class

Volunteer at various locations and organizations around Portland. New volunteer opportunities are added every month!

Students will gain experience with American lifestyles and daily culture as they practice their English in a variety of different settings.



*To volunteer in the International School and help people to learn Spanish was fun. I felt very comfortable because I could learn and practice English at the same time I could teach them Spanish.*

—Rebecca, Spain

**TAKE THE IELTS TEST AT PELA!**

**IELTS™**

Official Test Centre

The Portland English Language Academy is an IELTS Test Center. Tests are given 4 times every month.

**TAKE THE TOEIC TEST AT PELA!**

**TOEIC®**  
TEST OF ENGLISH FOR INTERNATIONAL COMMUNICATION

The Portland English Language Academy is also a TOEIC Test Center. Tests are given once every month.

## TUTORING CENTER

**4 days a week**, meet with our PELA teachers to get extra help with difficult grammar or homework.



## CONVERSATION GROUPS

**5 days a week**, join our conversation groups! Talk with Americans about topics you are interested in, and practice your English.







# PORTLAND ENGLISH LANGUAGE ACADEMY

[www.PortlandEnglish.edu](http://www.PortlandEnglish.edu)

2007 Lloyd Center  
Portland, Oregon 97232 U.S.A.

[apply@PortlandEnglish.edu](mailto:apply@PortlandEnglish.edu)  
503-226-1656

Accredited by

