



WAIKATO INSTITUTE OF EDUCATION



Welcome to

WAIKATO INSTITUTE OF EDUCATION

Aspire to study at University or a local High School? Need to improve your English for the workplace? Want to learn some English before you travel?

Since 2003, Waikato Institute of Education (WIE) has been the English Language School of choice for thousands of international and domestic students wishing to improve their English and experience a true Kiwi adventure.

Located in a modern building in the heart of Hamilton, WIE couldn't be more central. Cinemas, foodcourts, shopping malls, restaurants, bars and cafes are all seconds from campus, with the Hamilton Transport Centre and City Library only a few minutes away. Peaceful river paths, scenic gardens and lake circuits are also within walking distance.

At WIE you will have the opportunity to learn from highly qualified ESOL specialists and certified English test examiners. Whatever your goals are, we look forward to helping you along the pathway to success in all areas of your career-related, academic and personal endeavours.

Choose Quality. Choose WIE.



10 REASONS TO CHOOSE WIE

FANTASTIC CITY LOCATION



Located in the heart of New Zealand's largest inland city, WIE's campus is convenient, attractive and close to everything Hamilton has to offer... Cafes, shopping, cinemas, gardens, libraries, public transport, river walks and more!

LOW STUDENT TO TEACHER RATIO



Small classes lead to a more intensive learning experience. At WIE our classes are kept to a maximum of 15 students, with an average of 6 - 8. This ensures you will receive personalised attention and have greater opportunities to speak in class.

BEST VALUE FOR MONEY



With certified examiners on staff, government approved courses, our small class size, central location, competitive fees and student-centred approach, we think you will find WIE is the best value money can buy. Just ask about our Special Offers!

HIGHLY QUALIFIED STAFF



Learn from the experts with WIE's team of certified ESOL specialists. We have several certified test examiners on staff and all our teachers are native English speakers. Enthusiastic and engaging, they create a professional, yet fun learning environment and go the extra mile to help students achieve the results they want.

FLEXIBLE STUDY OPTIONS



Six levels of classes for both adults and juniors held mornings, afternoons and evenings, private tuition available anytime and a variety of courses to choose from, WIE is sure to have the right course for your needs.

COSMOPOLITIAN MIX



Students from over 35 different countries come to study at WIE, making your class a global community. Make friends with other students from all around the world, while enjoying WIE's diverse nationality mix... where everyone speaks English!

STATE-OF-THE-ART FACILITIES



WIE's campus is bright and spacious, with modern classrooms, student common room, billiards and ping pong tables, Satellite TV, free WiFi, fully-equipped student kitchen, multimedia computer lab and resource library.

CARING, SUPPORTIVE ENVIRONMENT



We really care about our students. Being a small school means teachers and staff get to know you personally, so you won't be just a number to us. WIE looks after you from the time you arrive, to the time you leave... and beyond!

PATHWAYS TO SUCCESS



Further your academic goals by studying IELTS or OET Preparation at WIE. Our preparation methods and weekly mock tests will help you improve your score and familiarise you with the exam. All test tutors are experts and have years of experience helping students achieve higher test scores.

24/7 SUPPORT



Our dedicated support staff are always available for you to contact any time of day, or night! If you have any concerns, even about non-school related issues, we are always ready to help and provide you with advice. Upon arrival you will be given a campus & city orientation, which includes setting up your own NZ bank account and helping you find your way around Hamilton.





Hamilton

YOUR EDUCATION AND ADVENTURE GATEWAY

New Zealand's beautiful river city lies south of Auckland and boasts world class education facilities, a full-size stadium, an International airport and the largest hospital in the Southern Hemisphere.

With almost half of the population under thirty years, Hamilton is one of the fastest growing cities in New Zealand and offers a vibrant, youthful atmosphere with plenty to keep students entertained.

There is much to satisfy any culture-seeker, from hot air balloons and music festivals to museums, cinemas, galleries, river walks and gardens. After dark, the city comes to life with a diverse mix of cafes, bars, restaurants and live music that give Hamilton its reputation for best student nightlife in the country.

Home to a world-renowned University, ranked first in ten subjects, as well as several other top education providers, students can get an internationally recognised qualification while enjoying a safe, friendly study environment.

If it's adventure you are after, Hamilton is the best place from where you can experience New Zealand's top tourist hotspots. Less than only three hours away lies Rotorua's Thermal Wonderland, the Whakapapa Ski Fields, Waitomo glow-worm Caves, Otorohonga Kiwi House, Hobbiton movie set, NZ's best surf beaches and hundreds of other exciting destinations... just take your pick!

Also far from known fault lines, at no risk of a Tsunami and a good distance from Auckland's volcanoes, Hamilton may well be New Zealand's safest city.

Stunning parks and gardens, vibrant night life, central to a multitude of tourist destinations and no traffic troubles... Choose Hamilton as your study destination and experience the benefits of city life, without the hassles.



LOCATION

Located on the first floor of one of Hamilton's most prestigious building, in the heart of the city centre.

- 30 seconds walk to banks
- 1 minute walk to the Foodcourt and cafes
- 2 minute walk to Cinemas and Post Office
- 3 minute walk to Hamilton Transport Centre
- 6 minute walk to Waikato River
- 15 minute walk to Waikato Museum
- 20 minute bus to Hamilton Zoo
- 40 minute drive to Raglan beach
- 1 hour drive to Auckland Airport
- 1 ½ hour drive to Auckland City



"WIE is a great place to learn English as there are so many people from different cultures the only way to communicate is by speaking English!"

— Cristian, CHILE



WIE is Here

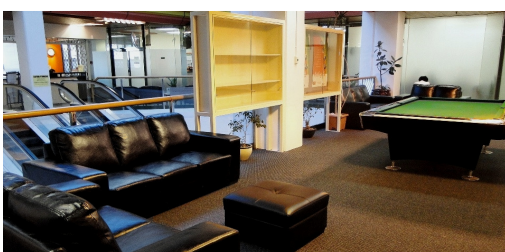




CAMPUS FACILITIES

Vibrant, bright and modern design compliments state-of-the-art facilities and student amenities.

- Free wireless internet (WiFi) access.
- 10 spacious classrooms, each individually air-conditioned and fitted with glass panels providing abundant natural light.
- Student common room furnished with café-style tables for students to enjoy lunch with friends.
- Fully equipped student kitchen with three microwaves, fridge, filtered drinking water, hot water facilities and free tea & coffee.
- 46 inch LCD Satellite TV featuring 60+ channels of international broadcasts from all around the world.
- Student lounge area with billiards table and cushy lounge suites to relax on between classes.
- Resource library of IELTS practise materials and other helpful learning resources available.
- Multimedia computer lab equipped with individual headsets for Skype calls with family.
- On-site snacks & refreshments vendor at entrance.
- Free telephone calls within the Waikato region.



SOCIAL ACTIVITIES

WIE's after-class activities are the perfect way to apply the English skills you have learned, outside the classroom, while experiencing fun tourist attractions and the best of the great outdoors.

Whether you join WIE's organised weekly activities or plan your own outing with friends, there are countless adventures for you to experience; bungee jumping, golfing, surfing, skiing, kayaking, sky diving, abseiling, hiking, scuba-diving, horse riding and white water rafting... the possibilities are endless!

After School Activities

- Minigolf
- Tennis
- Ten Pin Bowling
- Football/Rugby
- Hamilton Gardens
- Lasertag
- Waterworld



Half & Full-Day Trips

- Rotorua
- Waitomo Caves
- Auckland
- Mt Maunganui
- Taupo and Mt. Ruapehu
- Raglan Beach



ACCOMMODATION

Homestay

Homestay is the first choice for most of our international students, as it offers the chance to experience life in a Kiwi family environment.

- 3 meals provided every day
- Fully-furnished private bedroom
- Close to WIE and public transport
- Regular support from our Homestay Coordinator
- Airport pickup available

All WIE's host families have been carefully selected to ensure the family is welcoming and the home is a safe environment.

You will be sent a profile of your host family before you leave your country, enabling you to contact your new Kiwi family and get to know them before you arrive.

Other Accommodation

If you prefer to arrange your own accommodation, WIE is happy to help you find something to suit you. Choose from backpackers, a student hostel, hotel, apartment, or even rent a house with friends!



ENGLISH COURSES

With a range of course options for both adults and juniors, WIE offers full-time and part-time classes in the mornings, afternoons and evenings that are designed to fit around your needs.

GENERAL ENGLISH

Designed for international and domestic students of all levels, from beginner to advanced. Integrates reading, writing, speaking and listening skills. Class work is theme-based; activities focus on a weekly or bi-weekly topic so students can develop useful vocabulary and gain confidence using English in everyday settings.

IELTS PREPARATION

Want to study at a University or Polytechnic in New Zealand? Undergraduate degrees usually require an IELTS score of 6.0 overall, with post-graduate studies requiring even higher scores. Learn test skills and strategies from qualified test examiners, which will help you take the test with confidence and succeed in achieving your academic goals.

OET PREPARATION

Aimed at overseas registered nurses intending to sit the OET Exam. Learn medical terminology and vocabulary relating to subjects such as obstetrics, surgery, infectious diseases, oncology and other topics. The course focuses on students' speaking, listening, reading and writing skills as used in the nursing environment.

ENGLISH FOR MIGRANTS

For migrants with pre-paid English tuition, which has been paid to immigration. The course provides new migrants with a good understanding of the English language, while giving the chance to experience life in a classroom or home environment, mixing as much as possible with native English speakers.

ENGLISH STUDIES FOR NURSING REGISTRATION

An intensive 26-week English course designed to assist overseas registered nurses to meet the English language requirements for nursing registration in New Zealand, or for further nursing-related studies at a polytechnic. The course incorporates either IELTS or OET, depending on which exam you plan to sit.

HIGH SCHOOL PREPARATION

Planning to study in a New Zealand high school? Most high schools require international students to be at a certain level of English. This course aims to raise your level of English to the standard required for a local high school, while assisting you to communicate more effectively in a variety of settings and adapt to the New Zealand culture.

PRACTICAL ENGLISH FOR WORK

This course is designed for students who want to improve their English language skills for the workplace. The emphasis is on communication skills, accent correction, improving fluency and increasing confidence in speaking.

HOLIDAY PROGRAMMES

Individually tailored 2 - 6 week programmes which offer students the opportunity to experience New Zealand while learning English. A combination of morning English classes and afternoon activities with day trips to popular tourist destinations.

For more information on the courses above and other courses WIE offers please visit: www.wie.ac.nz/cp.htm



YOUR PATHWAY TO SUCCESS

High School Pathways

Students who enrol in WIE's High School Preparation Programme can go onto study at a local high school, provided they fulfil the school's entry requirements. WIE offers a FREE service to help students enrol at a high school after they finish their course.

Local High Schools in Waikato

- Cambridge High School
- Fairfield High School
- Fraser High School
- Hamilton Boys' High School
- Hamilton Christian School
- Hamilton Girls' High School
- Hillcrest High School
- Melville High School
- Sacred Heart Girls' College
- St John's Collegiate
- St Paul's Collegiate School
- St Peter's School
- Waikato Diocesan School for Girls

University and Polytechnic Pathways

Studying at WIE opens up great opportunities for tertiary study. Our graduates are accepted into diploma and degree programmes at universities and polytechnics all around New Zealand. Upon completing a degree or other tertiary qualification, graduates can then look for a job in New Zealand.

WIE provides a free service to help students enrol in the tertiary institute of their choice. Enrol through us and you could qualify for a WIE Scholarship and FREE student insurance!



"I found the IELTS Preparation class really helpful. When I sat the IELTS exam it was exactly what had been covered in class!"

— Milena, POLAND

Your First Day

Class Placement

On your first day at WIE you will sit a placement test to help us assess your level of English and place you in the right class. The test includes grammar, listening, writing and speaking components.

Academic Goals

You will meet with the Director of Studies, who will ask you questions to help us assist you in achieving your study goals.

Induction & Orientation

Our student advisors will give you some useful information to help you settle into life in NZ. Then follows a quick tour of the WIE campus and the city centre; we can also help you get a bank account, bus card and SIM card.

Your Classes

Levels

WIE has six levels of English classes from Beginner to Advanced, so no matter what your level is we have the right class for you.

Small Class Size

WIE's classes have an average of 6 to 8 students with a maximum of 15, so you get all the attention you deserve.

Tests and Assessments

Teachers hand out weekly tests in class and you will also have big tests twice a block to revise what you have learned and to assess your progress.

Methodology

Classes focus on practical, everyday use of English and academic vocabulary for those studying IELTS or OET. You will learn how to use correct grammar, new vocabulary and there will be plenty of opportunity to communicate in class.

Your Results

Certificate

When you complete a level or you finish your studies at WIE, you will receive a certificate listing the outcomes you have achieved.

Graduation

At the end of each block WIE has a Graduation Ceremony for all of our students. You will be given a certificate from your teacher and may even be promoted to the next level!



WHAT OUR STUDENTS SAY



Ilariya, 24 years old, RUSSIA

My four months at WIE have been the best time of my life! Every day was special and unique for me. The most remarkable thing is the school is like one big family; the staff are very kind and always help you and listen to you, which is important when you are alone far away from your home and family. The teachers know each student's level and know how to improve your weaknesses. At WIE you have a great opportunity to achieve your goals in English. I will never forget the fantastic time I had and the friends I have met here. Thank you WIE!



Peter, 17 years old, CHINA

I came to New Zealand to study English because I want to go to a high school in New Zealand. I really enjoyed studying English in WIE. They have many great teachers, and classmates are very friendly. They always helped me. After studying at WIE my English is much better than before. I took part in WIE's activities many times, I especially liked going to the beach. After finishing my studies I will be ready to go to High School and will tell my family friends that WIE is a great school to study at.



Alejandra, 31 years old, CHILE

I am so happy with my English since I started studying at WIE; I have improved my grammar, speaking, listening and I can now express myself with confidence. My teachers spent a lot of their time helping me with my grammar and prepared special exercises to help keep me up with the pace of the class. They spent a lot of their time outside of class helping me with my personal writing such as emails and reports for my work. Now, I can reach my dream of going to university in New Zealand. Thank you WIE for giving me this great opportunity to learn English with the best teachers and team in Waikato!



Azzam, 19 years old, SAUDI ARABIA

In my country, knowing English is necessary if you want to succeed, which is why I came to WIE. I really enjoyed studying at WIE, now I can speak much better than before! The teachers encourage students to ask good questions in class and my classmates were very nice, it was so easy to relate to them and discuss many different topics. The most interesting thing here is the friendliness and cooperation between students and teachers, it is remarkable. I participated in lots of WIE's activities such as the table tennis competition and I went on the school trip to Rotorua. Now I am going back home to study medicine and I will tell my friends to go to New Zealand and discover the culture at WIE.



Praisya, 30 years old, INDIA

I want to work as a registered nurse in New Zealand, so I chose to study at WIE to help me pass my IELTS. I learned a number of things from WIE which were very helpful to me as an international student. While I was at WIE I also went through a painful personal experience and was quite distressed, but the support staff really helped me to overcome the situation. My teacher would walk with me from school to the bus station. I never forget these things, I am really thankful to you all. The student support team helped me a lot especially; they gave me psychological support and encouraged me in my further studies. As a foreign student I am really grateful for this school.



Ting, 32 years old, CHINA

I had been living in New Zealand for 3 years before I came to study at WIE. Now I have been studying for 9 months and my English has improved a lot, with the help of my excellent teachers and lovely classmates. I was absolutely delighted because I got 6.5 in each band of IELTS exam! I couldn't have achieved this score without the guide of my teachers. These 9 months at WIE have been one of the best memories in my life.

QUALITY YOU CAN TRUST



NEW ZEALAND QUALIFICATIONS AUTHORITY
MANA TOHU MĀTAURANGA O AOTEAROA

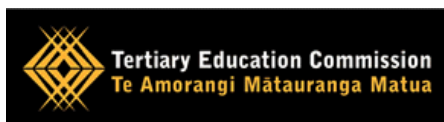
Courses conducted by Waikato Institute of Education are approved by NZQA (New Zealand Qualifications Authority). NZQA is a government organisation dedicated to ensuring New Zealand qualifications are regarded as credible and robust, both nationally and internationally.



Waikato Institute of Education is a signatory to the Code of Practice for the Pastoral Care of International Students and as such, ensures that a high standard of care and wellbeing is maintained for each of our International students. The Code is available in many different languages and can be downloaded at www.minedu.govt.nz/goto/international.



Education New Zealand is the Crown Agency responsible for New Zealand's international education promotion and representation worldwide. Waikato Institute of Education is a signatory to the NZ Educated brand and our profile is listed on their website: www.newzealandeducated.com/institution/568.



Waikato Institute of Education is **the only English School to receive New Zealand government funding for English Courses**. Both our General English and English for Work courses are funded by the NZ Tertiary Education Commission (TEC).



Waikato Institute of Education is a member of Waikato Education International (WEI), an organisation responsible for representing and promoting international education in the Waikato region and in particular, Hamilton.



Waikato Institute of Education is **the only authorised Public Test Centre for TOEIC in Waikato, New Zealand**. TOEIC (Test of English for International communication) is an international test that employers use worldwide, particularly in Asia and increasingly in Europe, to assess English language for the workplace.

Waikato Institute of Education and the New Zealand Government want international students in New Zealand to have a safe, enjoyable and rewarding place to study. The Code of Practise for Pastoral Care of International Students is an agreement made by the New Zealand Government to ensure that all education providers take responsibility for the wellbeing of their international students. Being a signatory of the Code of Practice, Waikato Institute of Education must comply with the Code and make sure all international students are safe, well informed, and properly cared for. A copy of the Code is available on the internet at www.minedu.govt.nz/NZEducation/EducationPolicies/InternationalEducation/ForInternationalStudentsAndParents/CodeOfPracticeInfoForStudents.aspx.



WAIKATO INSTITUTE OF EDUCATION
Choose Quality. Choose WIE.

Level 1 Centre Place Tower, 48 Ward Street
PO Box 773, Hamilton 3204, New Zealand
Ph: +647 838 2450 **Fax:** +647 838 2453
Email: info@wie.ac.nz **Web:** www.wie.ac.nz

