

In this factfile:

- Explore Bournemouth
- Explore Kings Bournemouth
- School facilities
- Local map
- Courses available
- Accommodation options
- **School life and community**
- Activities and excursions
- Clubs and societies
- Enrichment opportunities



Kings Bournemouth

Choose Kings Bournemouth

- 1 Often voted the best beach in the UK
- 2 University city with relaxed lifestyle
- 3 City centre residence



Explore Bournemouth

Location factfile: Kings Bournemouth

Renowned for its sandy coastline and relaxed pace of life, Bournemouth is both a beach resort and a university city. Its entertainment options are varied and endless, making it one of the UK's most popular destinations.



Key facts:

Location: South Coast of England

Population: 185,000

Nearest airports: Bournemouth Airport, Heathrow Airport

Nearest cities: Southampton, Bristol

Journey time to London: 2 hours

Bournemouth highlights



Bournemouth Beach

Bournemouth is home to 7 miles of award-winning beaches, often voted to be the best in the UK!



Bournemouth Parks and Gardens

Bournemouth is home to 1000 hectares of beautifully-maintained parks and gardens, including the Victorian-era Lower, Central and Upper Gardens which run through the town centre.



Russell-Cotes Gallery and Museum

Perched on top of a cliff top, this Italian-style seaside villa now operates as a museum and art gallery.



Bournemouth Pier

Bournemouth Pier houses a variety of traditional seaside attractions and also offers stunning views across the bay and out to the Isle of Wight.



Oceanarium

Learn more about marine life in the Bournemouth Oceanarium, home to a wide range of animals including sharks, turtles and penguins.

Food and drink

Bournemouth has a wide variety of cafes, restaurants and bars serving **fresh seafood, local produce, and many international cuisine** options to suit all budgets.

For a traditional British food experience, go for an **'Afternoon Tea'** at one of the cities tea rooms, or try a seaside classic such as **'fish and chips'** at the beach.

Bournemouth's town centre is home to lots of **bustling pubs and bars**, perfect for socialising with your new classmates and also meeting local British people.

For information about eating and drinking in Bournemouth, have a look at these websites:

- bournemouth.co.uk/food-and-drink
- visitbournemouth.com/eating-out
- theculturetrip.com/europe/united-kingdom/bournemouth



Entertainment, arts and culture

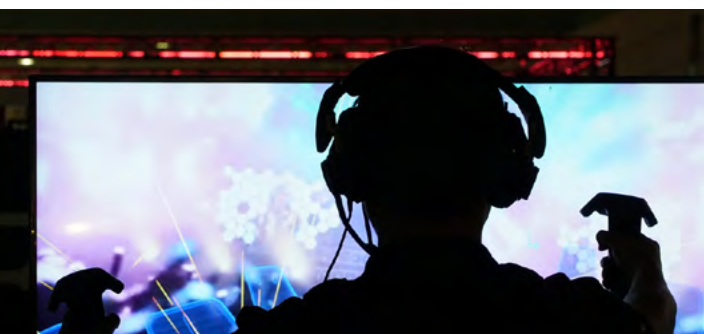
There are many opportunities to enjoy arts, culture and entertainment in and around Bournemouth.

Go to a live music concert at one of Bournemouth's popular venues. The **Bournemouth International Centre (BIC)** and **O2 Academy** host well-known musicians and bands throughout the year.

Watch a film — the **Odeon** cinema is situated on Westover Road and offers all the latest releases. The **Regent Cinema** in Christchurch and the **Lighthouse** in Poole offer a choice of classic and art house films.

There are stand-up and open mic nights at many pubs and clubs where you can **watch live comedy**.

Experience immersive virtual reality gaming at the new **Centre VR** in the BH2 Leisure Complex, located only 10 minutes' walk from the school.



Sports and leisure

Learn to **sail, windsurf, surf or kite-surf** at a local water sports academy.

Play **beach volleyball** on Bournemouth's miles of sandy coastline.

Join a local gym — there are many well-equipped local gyms and sports centres located around the city. Many offer student discounts on membership.

Local football club, **AFC Bournemouth**, play in the British **Premier League**, and host other famous teams such as Liverpool and Manchester United throughout the season.

For information about sports and leisure options near to Kings Bournemouth, have a look at these websites:

- bournemouth.co.uk/things-to-do/ (local information website)
- **Active Dorset** (local sport information)
- **AFC Bournemouth** (professional football team)



Day trips and excursions

Visit the incredible **Jurassic Coast World Heritage Site** to see dramatic coastal rock formations and amazing sea views.

Poole — the neighbouring coastal town of Poole is known for its natural harbour and picturesque sandy beaches.

Portsmouth — the city of Portsmouth is home to historic dockyards, maritime museums, and the famous Spinnaker Tower.

The **New Forest National Park** is a short train journey from Bournemouth and offers opportunities for mountain biking, hiking, or even horse riding in beautiful natural surroundings.



Budget for your stay in Bournemouth

You will need to pay for some of the activities and excursions described here. To find out more go to [our website](#) or follow this **QR code**



Explore Kings Bournemouth

Consisting of two large buildings, the Braidley Road campus is the main teaching and administration centre, and is surrounded by gardens with lawns and patios

Facilities at the campus are fantastic, with spacious, well-equipped classrooms, two computer learning centres, a leisure/activity hall and a cafeteria and restaurant. Outside, there is a dedicated on-site sports court.

School facilities

Well-equipped, classrooms

Well-stocked library

Computer Learning Centre

Wireless internet access

Computer Learning Centre

Multi-purpose sports court for activities such as basketball, 5-a-side football, volleyball

Indoor sports hall for games, badminton, table tennis

On-site student cafeteria, and snack bar/ coffee shop

Outdoor dining area

Science lab

Art room

Location factfile: Kings Bournemouth



Braidley Road campus



The Hall is a great space for lots of different events



Many classrooms at Braidley Road have been recently renovated



51 Braidley Road, the second campus building, across the street from 58 Braidley Road



The large sports court within the grounds of 58 Braidley Road



Versatile space above the cafeteria used for teaching or activities



The top floor of our Braidley Road campus has been renovated in a contemporary style



The lively student cafeteria with great hot and cold food served fresh every day



School address and contact number

Kings Bournemouth
 58 Braidley Road
 Bournemouth
 Dorset, BH2 6LD

T +44 (0)1202 293535

E bournemouth@kingseducation.com

School location

Kings Bournemouth is located in an affluent and peaceful residential area, 10 minutes' walk from the city centre.

Courses offered

[General English](#)

[Intensive English](#)

[IELTS Preparation](#)

[Diploma of General English](#)

[Diploma of Intensive English](#)

Key dates

Kings Bournemouth is open all year except for the following public holiday dates:

Public Holidays 2023

Monday 2 January
 Friday 7 April
 Monday 10th April
 Monday 1 May
 Monday 8 May
 Monday 29 May
 Monday 28 August

Christmas holiday dates 2023 – 24

25 December 2023 – 7 January 2024
 (school reopens 8 January 2024)



Virtual tour and video

[View Kings Bournemouth virtual tour here](#)
 or follow this QR code



Kings London on social media

[Kings Bournemouth on Facebook](#)

[Kings Bournemouth on Twitter](#)

[Kings Bournemouth on Instagram](#)



Who you'll meet



Andy Roper
Principal

"I look forward to welcoming you to the Kings family at Kings Bournemouth. I'm sure you'll enjoy your time in our wonderful seaside town both in the classroom as you improve your English and outside of it on one of the trips, excursions or activities that the school run."



Lucia Trembulakova
Student Support and
Welfare Officer

"My role at Kings is to support students throughout their course, help with queries, and ensure they stay well and safe. I really enjoy meeting students from all over the world. Not being originally from the UK myself, I feel that I can relate to student experiences of being away from home and family."



Lucy Polley
Accommodation and
Welfare Manager

"I ensure that students enjoy living in their accommodation, have access to everything they need and are looked after by our friendly wardens. I really enjoy meeting students from all over the world and learning about different cultures."

Accommodation options



Town centre student residences — St Peters Quarter and Post Office Road

Our two centrally located student residences offer easy access to Kings Bournemouth.

They contain light and spacious single or twin bedrooms, all with en suite bathrooms.

They are offered on a self-catering basis, with fully-equipped communal kitchen/dining areas available.

- **Town Centre — St Peters Quarter**
- **Town Centre — Post Office Road**



Homestay

Homestay is a great way to experience day-to-day home life in the UK and practice your English

Every homestay is carefully inspected by our accommodation team and checked on a regular basis

Homestay accommodation offers single rooms with shared bathrooms

Half-board meals (breakfast and dinner 7 days per week) are included in the price

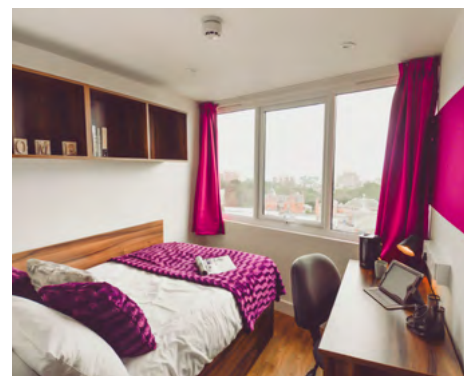


Charminster Residence

The **Charminster Residence** is located in a safe and friendly residential, with easy access to local amenities, and is a 25-minute walk from the school.

There are single and twin en suite bedrooms offered year-round for students aged 14+.

The meal plan is half-board, with breakfast and dinner prepared fresh daily by our chef at the on-site restaurant.



Lulworth Summer Residence

The **Lulworth Summer Residence** is located 10 minutes' walk from the town centre, with easy access to transport links and local amenities

The residence offers single bedrooms with en suite bathrooms for students aged 16 – 18 during the Summer period.

The residence is offered on a half-board basis, with breakfast and dinner served at the on-site restaurant 7 days per week.

Download all Bournemouth accommodation factsheets and photo galleries here

Visit kings-english.com/bournemouth or follow this QR code



Location factfile: Kings Bournemouth

School life and community

Take advantage of the wealth of extra-curricular opportunities available at Kings Bournemouth. These enrichment options are fantastic for both personal and professional development allow you to put your new language skills into practice outside class.

Social programme

Our exciting and varied social programmes offer the opportunity to get involved in just about any activity you wish!

From sports to cultural activities, visits to museums, art galleries, concerts, or even trips to another city or country, your free time will always be full of fun, friendship, and adventure.

Career guidance opportunities

All English language students also have the option to get involved in a range of career guidance opportunities.

This additional support is designed specifically for students who are preparing for their next steps in life, whether that be university progression, preparing to start a new job, or even entering the world of work for the first time.

Example options include – workshops or lectures; one-to-one university counselling; Special Interest Group (SIG) options.

Clubs and societies

- There are a wide range of clubs and societies available for all students to join. This is a great opportunity to make friends who have shared interests and develop your language skills within specific contexts or fields. Popular examples in Bournemouth include:
- Gaming Club
 - IELTS Club
 - Student Council
 - Spiritual Wellbeing Club
 - Chemistry Club
 - Basketball Club
 - Volleyball / Badminton Club

Additional weekly lectures

We have a range of additional weekly afternoon lectures and workshops that are open to all students.

These lectures will be on a wide range of topics, from pronunciation and grammar, to exam preparation and local culture and customs.

Popular activities include:

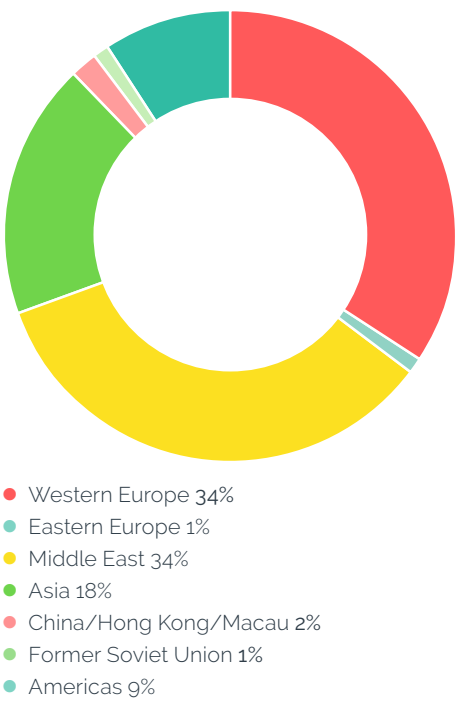
- Local walking tours
- Beach volleyball
- Coffee and conversation
- Basketball
- Movie night
- Half-day excursions to local towns and National Parks
- Weekend full-day trips to other cities in the UK

Fundraising, community engagement and volunteering

Kings is proud to support our official charity partner **United World Schools**.

Our students get involved in all kinds of exciting fundraising activities and events throughout the year.

Nationality statistics



Sample activities calendar

(Click the image below to view current activities calendar)

Sunday	Monday	Tuesday	Wednesday	Thursday	Friday	Saturday
WEEKEND EXCURSIONS Available through UK Study Tours and Indigo Travel. Please see the activities desk to make a booking.	Walking Tour 13.30 - 16.15 Cost: Free!!!	Mini Golf 15.00 - 16.15 Cost: £2.00	Salsa Dancing 20.00 - 22.30 Cost: £7.00	Beach Games 15.00 - 17.00 (1st year) Cost: Free!!!	Hengistbury Head Walk 12.30 - 16.15 Cost: £3.00	WEEKEND EXCURSIONS Available through UK Study Tours and Indigo Travel. Please see the activities desk to make a booking.
WEEKEND EXCURSIONS Available through UK Study Tours and Indigo Travel. Please see the activities desk to make a booking.	Pancake Making 15.00 - 16.15 Cost: £2.00	N Mandela Drawing 14.00 - 16.15 Cost: Free!!!	Karaoke 19.00 - 22.00 (Kings & 1st year) Cost: £3.00	Escape Room 15.00 - 16.15 Cost: £7.00	Poole Quay 14.30 - 16.15 Cost: £6.00	WEEKEND EXCURSIONS Available through UK Study Tours and Indigo Travel. Please see the activities desk to make a booking.
WEEKEND EXCURSIONS Available through UK Study Tours and Indigo Travel. Please see the activities desk to make a booking.	Beach Bike Ride 15.00 - 16.15 (1st year) Cost: £6.00	Tennis 15.00 - 16.15 Cost: £3.00	Boarding 18.00 - 20.00 (SPQ) Cost: £3.00	Pizza Making 15.00 - 16.15 (Kings & 1st year) Cost: £3.00	Southampton Shopping 14.30 - 16.15 Cost: £10.00	WEEKEND EXCURSIONS Available through UK Study Tours and Indigo Travel. Please see the activities desk to make a booking.
WEEKEND EXCURSIONS Available through UK Study Tours and Indigo Travel. Please see the activities desk to make a booking.	The Hangover 01 15.00 - 16.15 Cost: Free!!!	Futsal 15.00 - 16.15 Cost: Free!!!	Noodle Bar 18.00 - 20.00 (1st year) Cost: £10.00	Laser Tag 15.00 - 16.15 Cost: £12.00	Christchurch Quay 12.30 - 16.15 Cost: £3.00	WEEKEND EXCURSIONS Available through UK Study Tours and Indigo Travel. Please see the activities desk to make a booking.
WEEKEND EXCURSIONS Available through UK Study Tours and Indigo Travel. Please see the activities desk to make a booking.	Rock Climbing 15.00 - 16.15 Cost: £12.00	Weekend Excursions Can be booked through UK Study Tours and Indigo Travel. Please see the activities desk to book your trip.	Please note all activities are subject to change. Please see our Facebook page for more details.	Check out our enrichment timetable for recurring weekly dates and activities.	Please see Tom or any member of the activities team during your break or after school to book onto any activity or excursion.	facebook.com/kingsbournemouth

Please note clubs, societies, lectures and activities are subject to availability of teachers and time of the year.